



YOUR PATIENTS RELY ON YOU.
YOU CAN RELY ON US.

VividTM

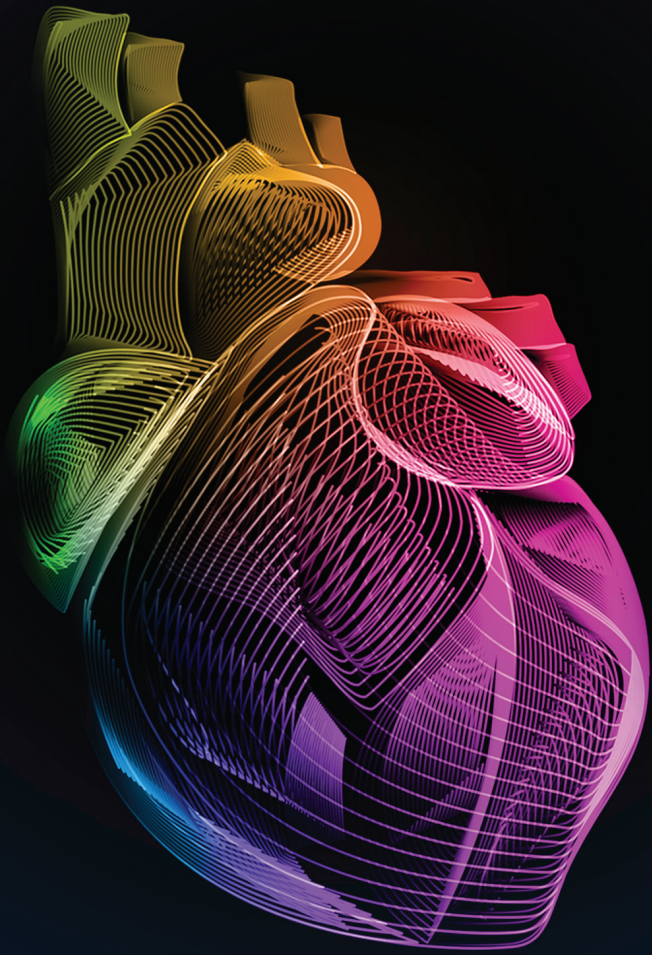
Clinical Applications

ULTRA EDITION

VIVID CLINICAL APPLICATIONS

A wide range of clinical applications for use in Core Echo Lab, Interventional, Pediatrics and even beyond cardiology.

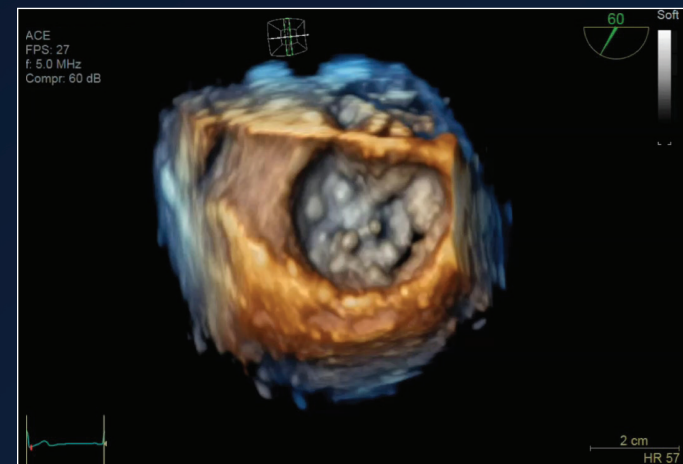
The Ultra Edition¹ applications highlighted in **bold** are referent to our latest release.



Category	Standard Applications	Ultra Edition Applications
VISUALIZATION	HDlive™	Dual Crop FlexiLight HD Color
FLOW QUANTIFICATION	Cardiac Auto Doppler <small>AI</small>	AI Auto Measure Spectrum Recognition <small>AI</small> BSI
CHAMBER QUANTIFICATION	4D Auto LAQ 4D Auto RVQ 4D Auto LVQ	Easy AutoEF <small>AI</small> AI Auto Measure 2D <small>AI</small>
NAVIGATION	4D Markers FlexiViews View-X	CT Fusion Live Pre-Post Compare FlexiSlice Extend Scan Coach
VALVE QUANTIFICATION	4D Auto AVQ 4D Auto MVQ	4D Auto TVQ
AFI FUNCTIONAL IMAGING	AFI Stress Myocardial Work	Easy AFI LV <small>AI</small> AFI RV AFI LA

VISUALIZATION

WHY GUESS WHEN YOU CAN SEE.

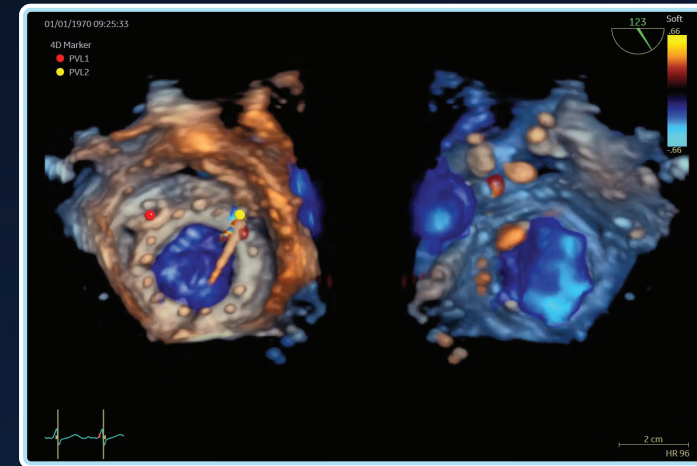


HDlive™

Simulates light propagation and scattering through tissue

Provides enhanced visualization of anatomical structures.

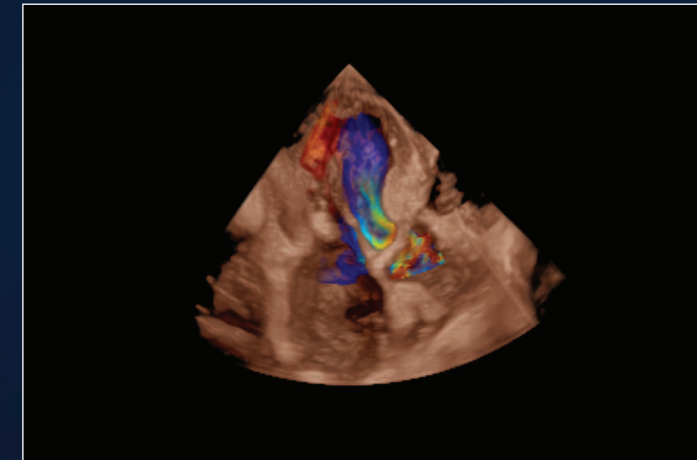
ULTRA EDITION



Dual Crop

Visualizes a structure, such as a valve or device, from two opposing directions

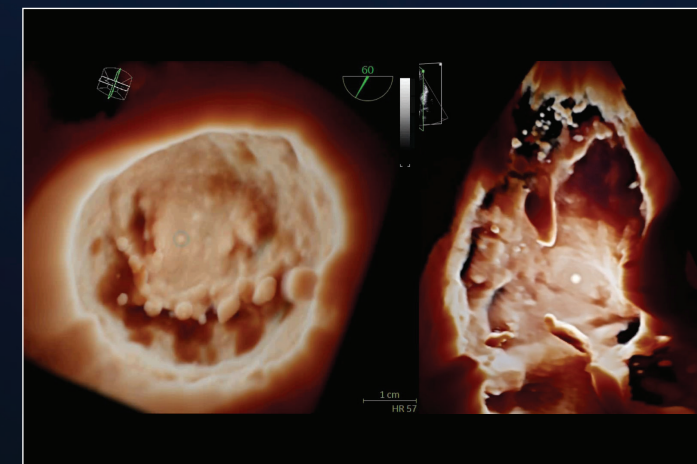
Fast and efficient visualization of complex structures from both sides simultaneously, enhancing clinical assessment of valve anomalies or device deployment.



HD Color

4D color flow rendering technique for semi-transparent visualization of origin and size of high velocity jets

Enhance spatial relationships between flow and surrounding structures; suppress non-diagnostic low flow information.



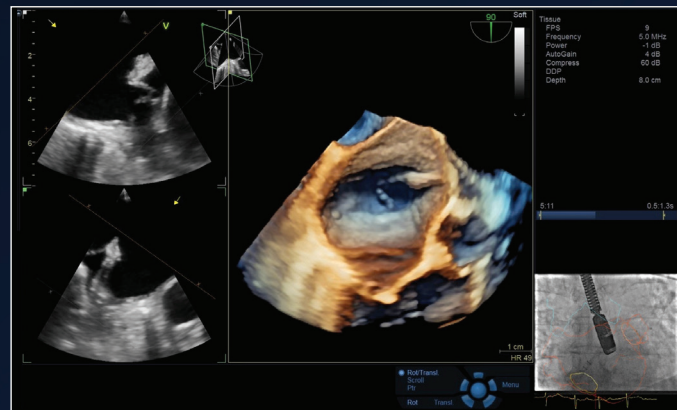
FlexiLight

Rendering technique for photo-realistic light-source based illumination of heart structures

Comprehensive visualization of leaflets, trabeculae, regurgitant orifices, clefts, aneurisms, and thrombi.

NAVIGATION

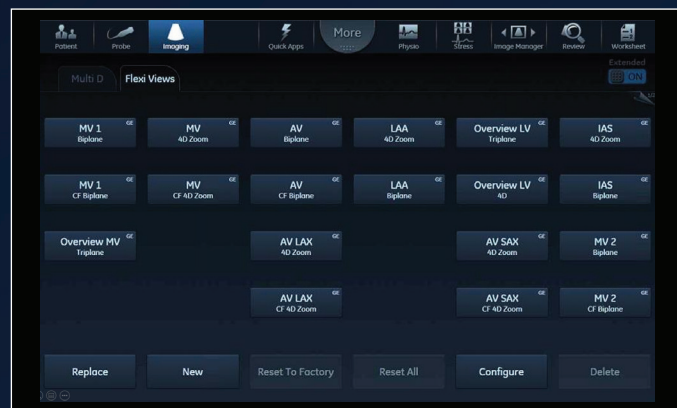
WHY GUESS WHEN YOU CAN SEE.



View-X

See X-ray from fluoro in real time on ultrasound screen as a picture in picture

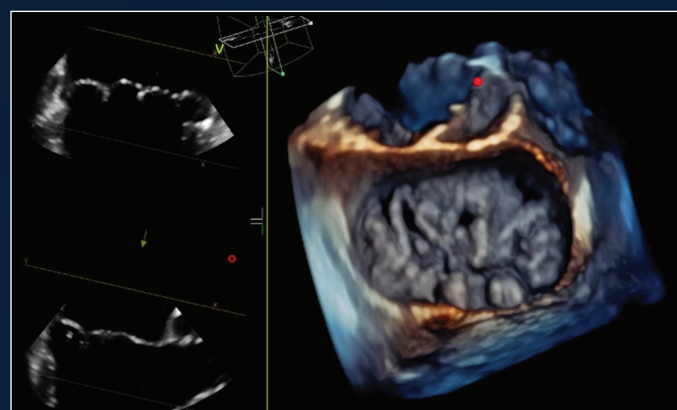
Facilitates communication between team members during procedures.



FlexiViews

Quick access to predefined 4D/multiplane views during live mode

Potentially reduce scan time during complex interventional procedures.

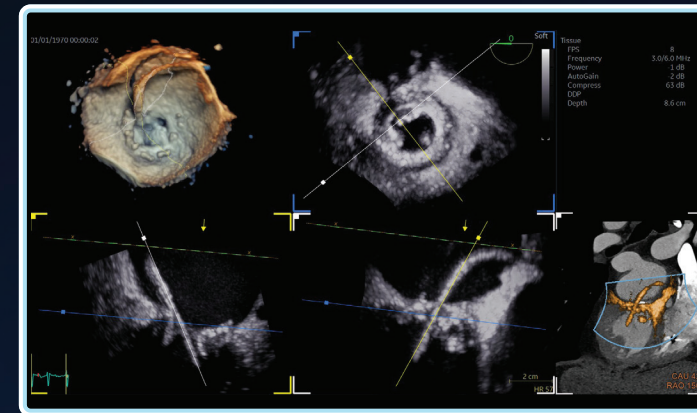


4D Markers

Annotations viewable from all angles on 4D ultrasound volume data set and 2D views

Enhance communication in echo lab, cath lab, and OR

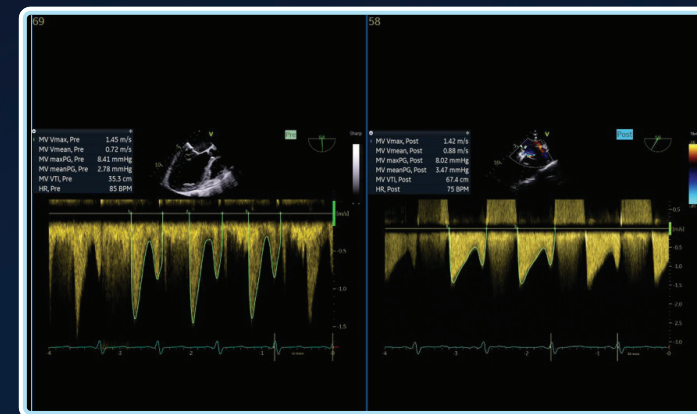
ULTRA EDITION



CT Fusion Live

Fuse CT and 4D ultrasound data in both live and replay

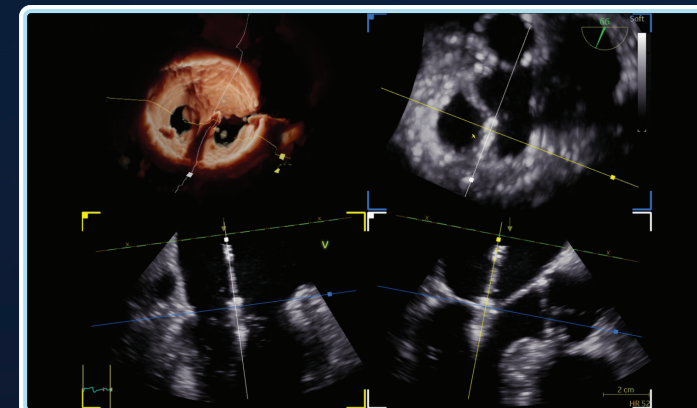
Extend field-of-view for better understanding of heart anatomy during interventional planning and procedures



Pre-Post Compare

Label measurements and images acquired in different stages of an exam or procedure, to compare pre & post procedure

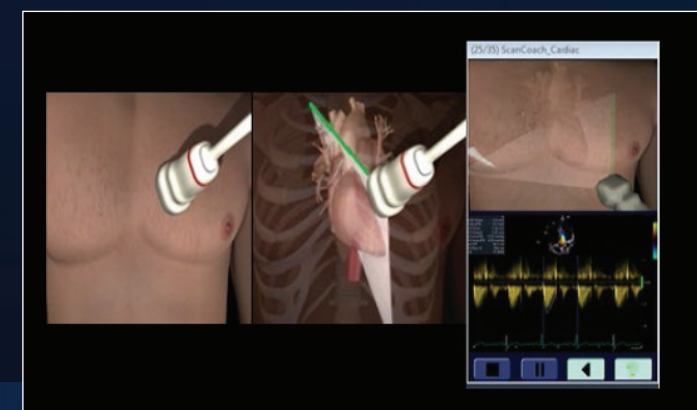
Obtain a clear record of performance in different stages within a procedure, helping to quantify impact and verify effective deployment of implanted devices.



FlexiSlice Extend

Ability to rotate the view direction of the volume rendering independently of slice orientations

Increases flexibility of FlexiViews, improving clinical workflow efficiency and easier to see details of structures of the volume rendering.



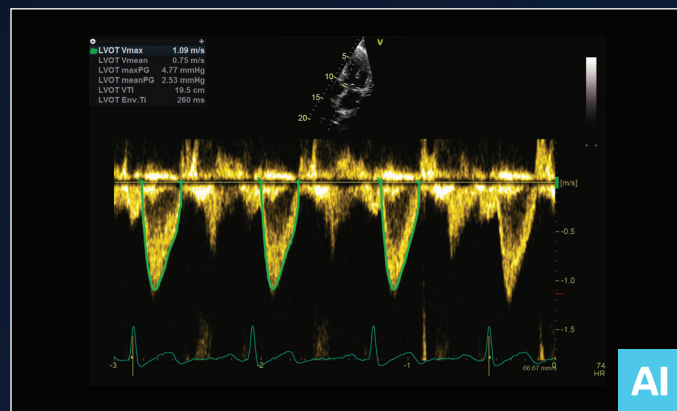
Scan Coach

Provides modules depicting basic scanning techniques with animated graphics and reference clinical images

Helps inexperienced users performing echo scans, and assists in positioning the probe and orientation.

FLOW QUANTIFICATION

YOUR TIME IS PRECIOUS. SAVE IT.

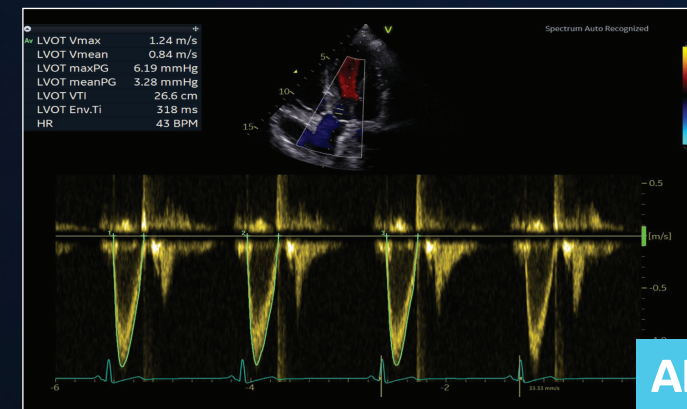


Cardiac Auto Doppler

Semi-automated Cardiac Doppler measurements

Enhances reproducibility of follow-up studies, offers Doppler measurement in multiple cardiac cycles, supporting less experienced users.

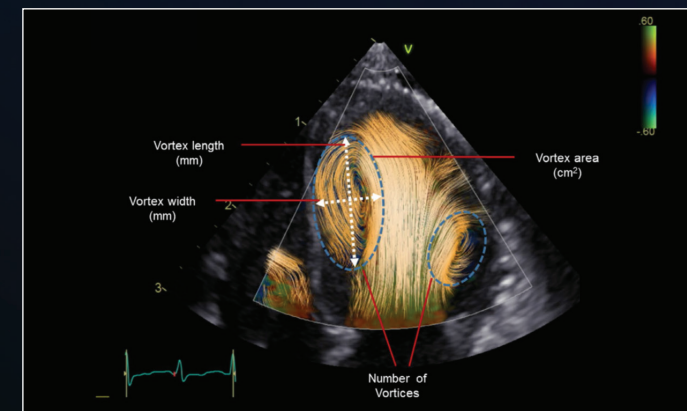
ULTRA EDITION



AI Auto Measure Spectrum Recognition

Semi-automatic selection of appropriate spectral Doppler measurements

Fewer manual interactions, enhancing reproducibility of follow-up studies, and supporting less experienced users.



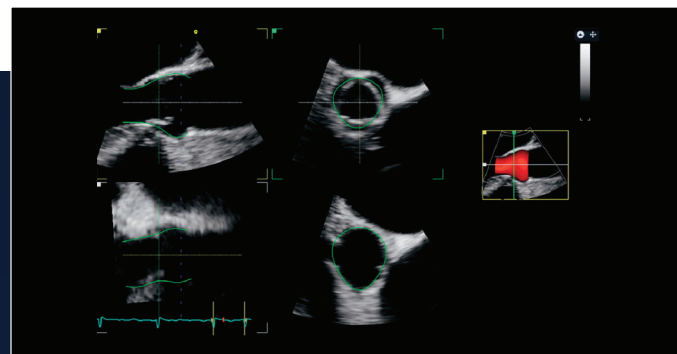
Blood Speckle Imaging 2.0

Insights into complex blood flow patterns such as vortex formation and duration

Provides multiple modes for visualizing blood flows, and complimentary information for assessment of dilated cardiomyopathy and heart failure.

VALVE QUANTIFICATION

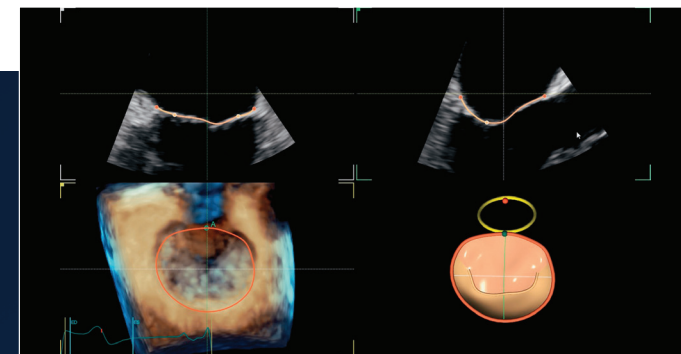
PRECISION AT THE HEART OF QUANTIFICATION



4D Auto AVQ

Semi-automated 4D tool enables fast quantification of aortic valve

Automatically segment, align, and quantify the aortic outflow tract.

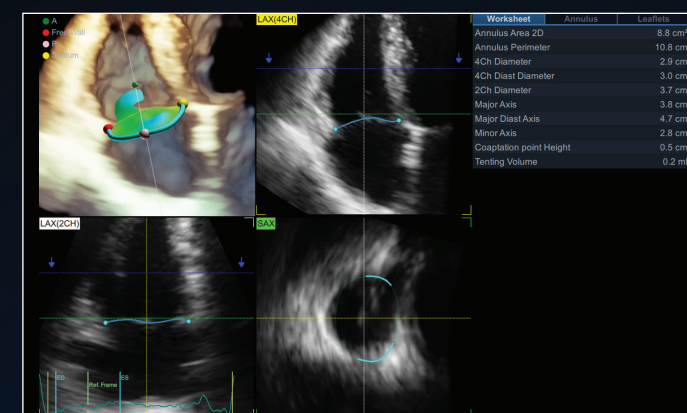


4D Auto MVQ

Mitral Valve quantification tool derived from volume ultrasound data

Helps visualize and quantify mitral valve via a semi-automatic surface detecting algorithm.

ULTRA EDITION



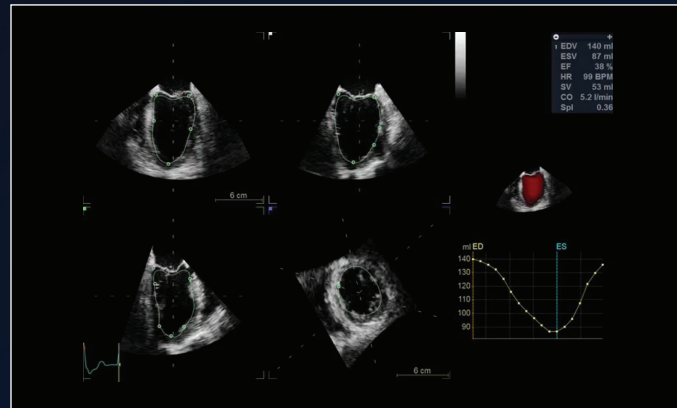
4D Auto TVQ

Semi-automated 4D tool enables fast visualization and quantification of the tricuspid valve anatomy

Cost effective alternative to traditional tricuspid annulus assessment; handles 3D shape of tricuspid valve and provides 15 static and dynamic measurements.

CHAMBER QUANTIFICATION

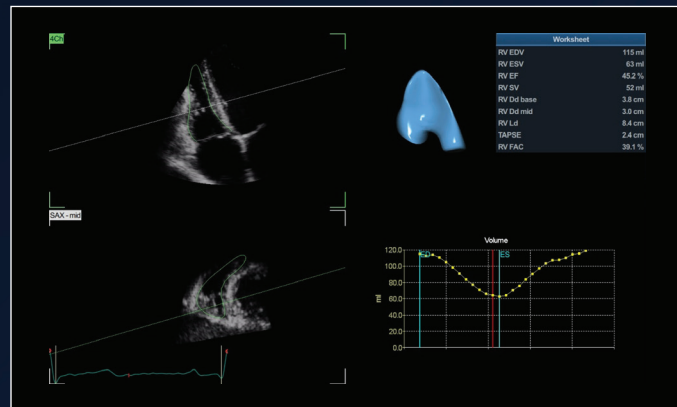
PRECISION AT THE HEART OF QUANTIFICATION.



4D Auto LVQ

Semi-automatic quantification of left ventricle

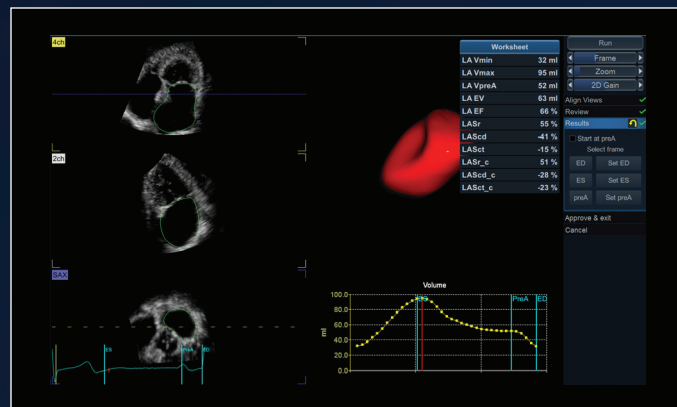
Fast, easy, two-click method to define initial endocardial border.



4D Auto RVQ

Semi-automatic quantification of the right ventricle

Helps visualize and quantify the right ventricle.

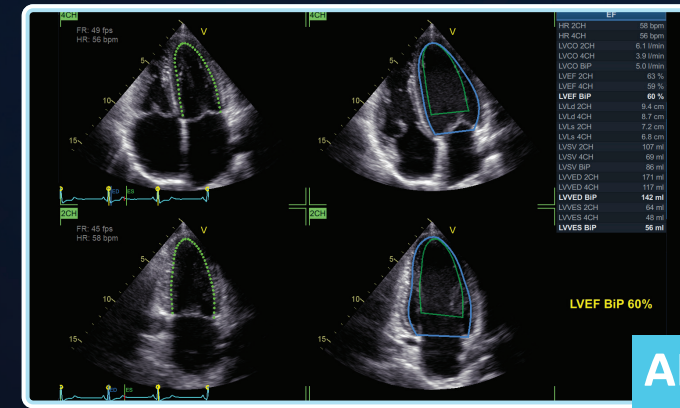


4D Auto LAQ

Semi-automatic quantification of left atrium

Fast, reproducible, and accurate left atrial volumes, ejection fraction, global longitudinal and circumferential strain.

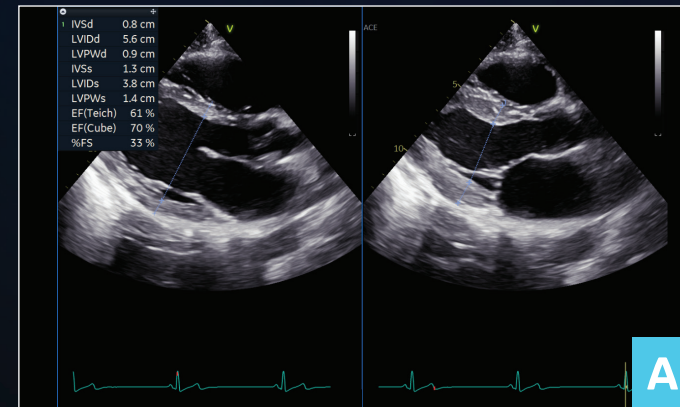
ULTRA EDITION



Easy AutoEF

Automated one-click ejection fraction measurement

Our AI-based Auto ROI detection algorithm allows users to complete ejection fraction, with no manual interaction apart from initiating the tool and approving the results.



AI Auto Measure 2D

Semi-automated LV dimension measurements in parasternal long axis view

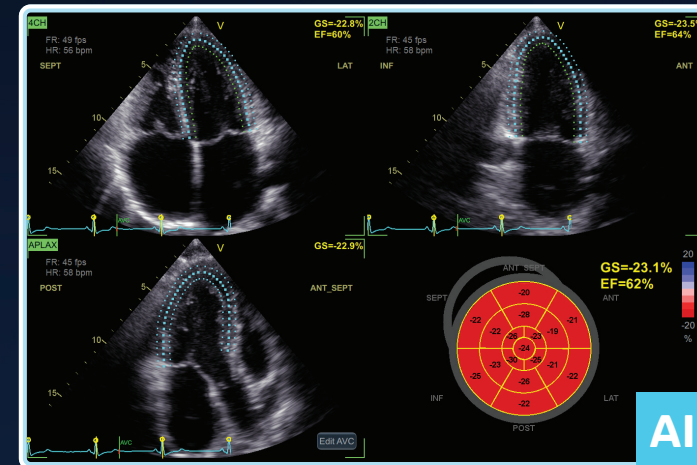
Fast measurements of LV dimensions, up to 80% fewer clicks, reducing manual workflow during analysis of cardiac images.

AFI FUNCTIONAL IMAGING

FROM DIAGNOSIS TO PROGNOSIS.



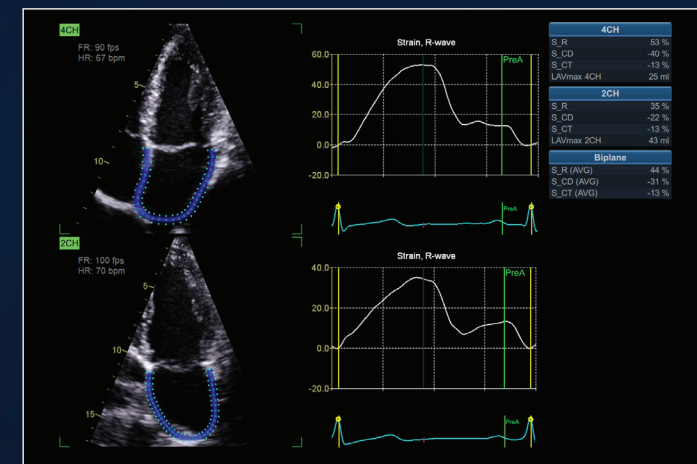
ULTRA EDITION



Easy AFI LV

Automated one-click AFI LV analysis

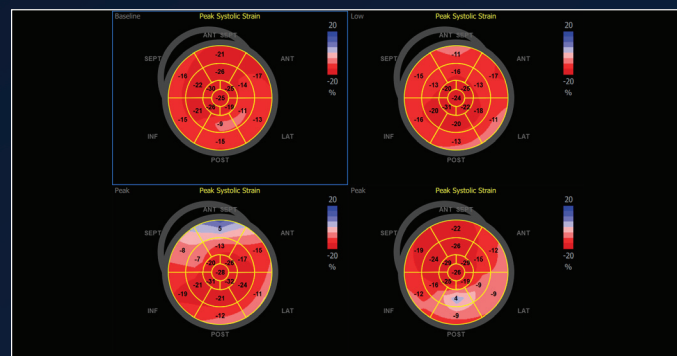
Our AI-based global and segmental strain measurements require no manual interaction apart from initiating the tool and approving the results. Additionally, you will be able to view EF measurements.



AFI LA

Assess left atrial function by advanced speckle tracking echocardiography

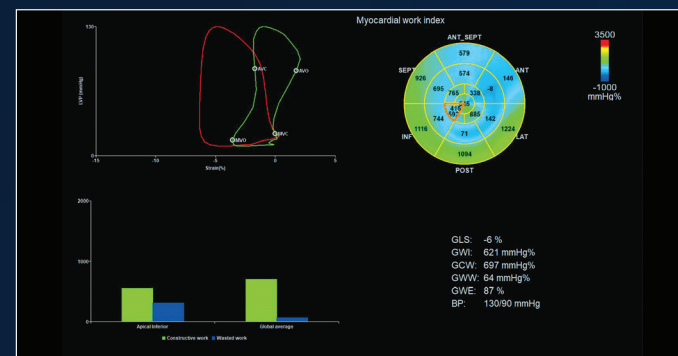
Supports left atrium strain, volumes, and emptying fraction measurements.



AFI Stress

Quantify wall motion at all stress levels

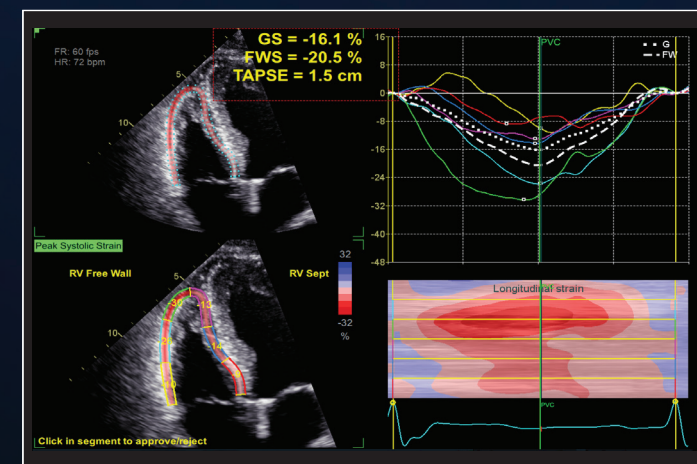
Quantify longitudinal segmental and global strain for contractility assessment at each stress level.



MyocardialWork

Strain tool accounts for systolic blood pressure MV and AV opening and closure times

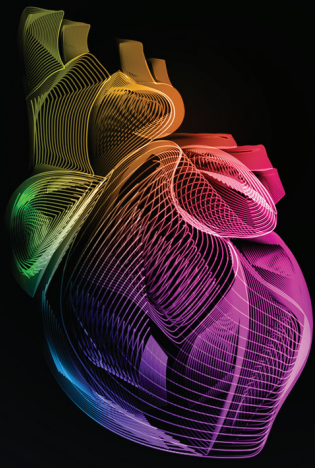
May provide more accurate and reproducible results based on new and reduced load dependent parameters.



AFI RV

Assess right ventricular function by advanced speckle tracking echocardiography

Supports right ventricle free wall strain, global strain, and TAPSE.



VIVID CLINICAL APPLICATIONS

	Vivid E series	Vivid S series	Vivid T series	Vivid iq	EchoPAC™
VISUALIZATION					
CT Fusion	•				•
HD <i>live</i> ™	•	•			•
HD Color	•	•		•	•
Dual Crop	•	•		•	•
FlexiLight	•				•
NAVIGATION					
CT Fusion Live	•				
FlexiSlice Extend	•	•		•	•
Pre-Post Compare	•	•	•	•	•
4D Markers	•	•		•	•
FlexiViews	•	•		•	
View-X	•	•		•	
LVO contrast	•	•	•	•	
Scan Coach			•	•	
AFI FUNCTIONAL IMAGING					
Easy AFI LV	AI	•	•	•	•
AFI RV	•	•	•	•	•
AFI LA	•	•	•	•	•
Myocardial Work	•				•
AFI Stress	•	•			•

	Vivid E series	Vivid S series	Vivid T series	Vivid iq	EchoPAC™
CHAMBER QUANTIFICATION					
Easy AutoEF	AI	•	•	•	•
AI Auto Measure 2D	AI	•	•	•	•
4D Auto LAQ	•				•
4D Auto RVQ	•	•			•
4D Auto LVQ	•	•		•	•
VALVE QUANTIFICATION					
4D Auto TVQ	•				•
4D Auto AVQ	•	•		•	•
4D Auto MVQ	•	•		•	•
FLOW QUANTIFICATION					
AI Auto Measure Spectrum Recognition	AI	•	•	•	•
Blood Speckle Imaging 2.0	•				
Cardiac Auto Doppler	AI	•	•	•	•



About GE Healthcare:

GE Healthcare is the \$18 billion healthcare business of GE (NYSE: GE). As a leading global medical technology and digital solutions innovator, GE Healthcare enables clinicians to make faster, more informed decisions through intelligent devices, data analytics, applications and services, supported by its Edison intelligence platform. With over 100 years of healthcare industry experience and around 50,000 employees globally, the company operates at the center of an ecosystem working toward precision health, digitizing healthcare, helping drive productivity and improve outcomes for patients, providers, health systems and researchers around the world.

Follow us on Facebook, LinkedIn, Twitter, and Insights for the latest news, or visit our website www.gehealthcare.com for more information.

References:

1. Ultra Edition is not a product name. The content herein refers to the 2022 release of the Vivid portfolio.



© 2022 General Electric Company. All rights reserved.

GE, the GE Monogram, Vivid, cSound, XDclear, HD*live*, EchoPAC, ViewPoint, Centricity, Edison, iCenter, iLINQ and InSite are trademarks of General Electric Company. GE Healthcare, a division of General Electric Company.

DICOM is the registered trademark of the National Electrical Manufacturers Association for its standards publications relating to digital communications of medical information.

Third party trademarks are the property of their respective owners.